
ECAM28.465

COFFEE MAKER

Instructions for use. Keep these instructions
Visit www.delonghiregistration.com to register
your product

Visit www.delonghi.com for a list of service
centers near you.

ELECTRIC CHARACTERISTICS

120 V~ 60 Hz 1250 W

MACHINE À CAFÉ

Mode d'emploi . Conservez cette notice

Visitez www.delonghiregistration.com pour
enregistrer votre produit en ligne.

Visitez www.delonghi.com pour y voir une liste
des centres de réparation proches de chez vous.

CARACTÉRISTIQUES ÉLECTRIQUES

120 V~ 60 Hz 1250 W

CAFETERA

Repase y guarde estas instrucciones.

Lea cuidadosamente este instructivo antes de usar
su aparato.

Visite www.delonghiregistration.com para
registrar su producto en línea.

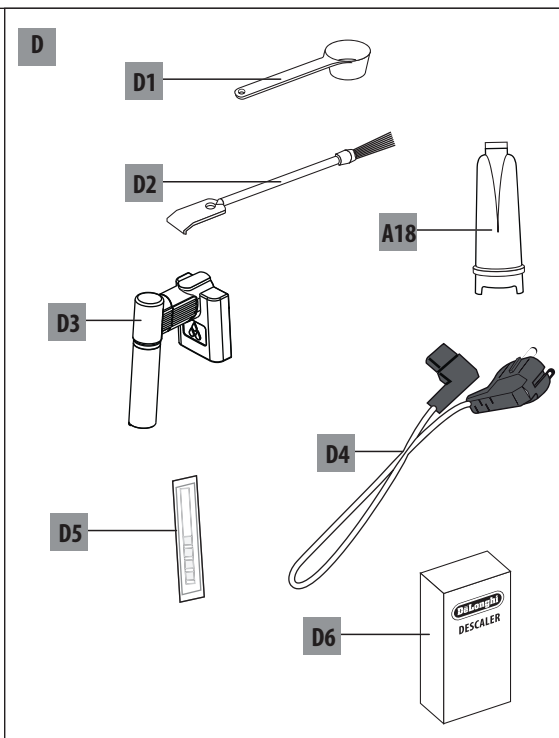
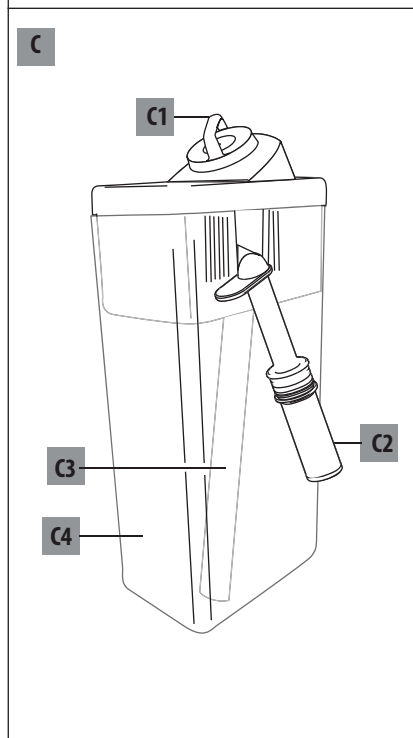
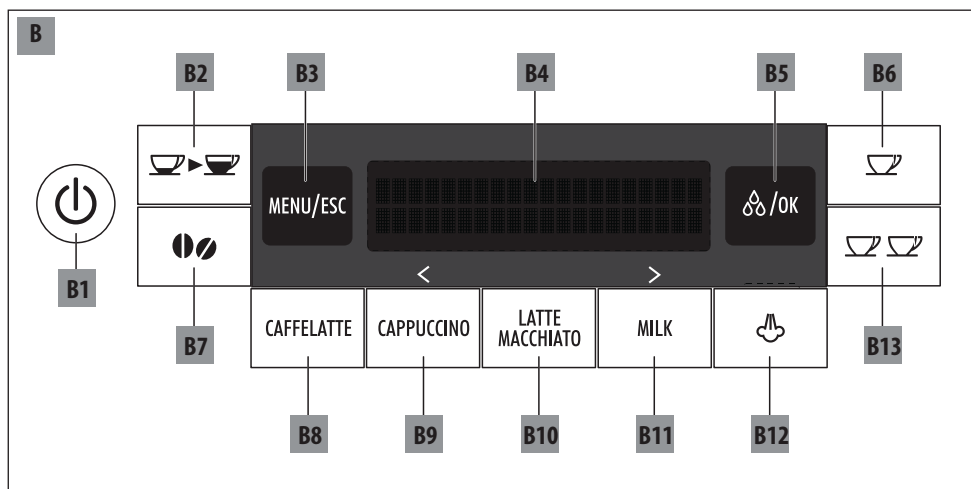
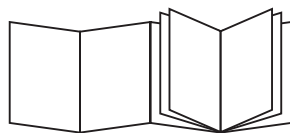
Visite www.delonghi.com para ver la lista de
centros de servicios cercanos a usted.

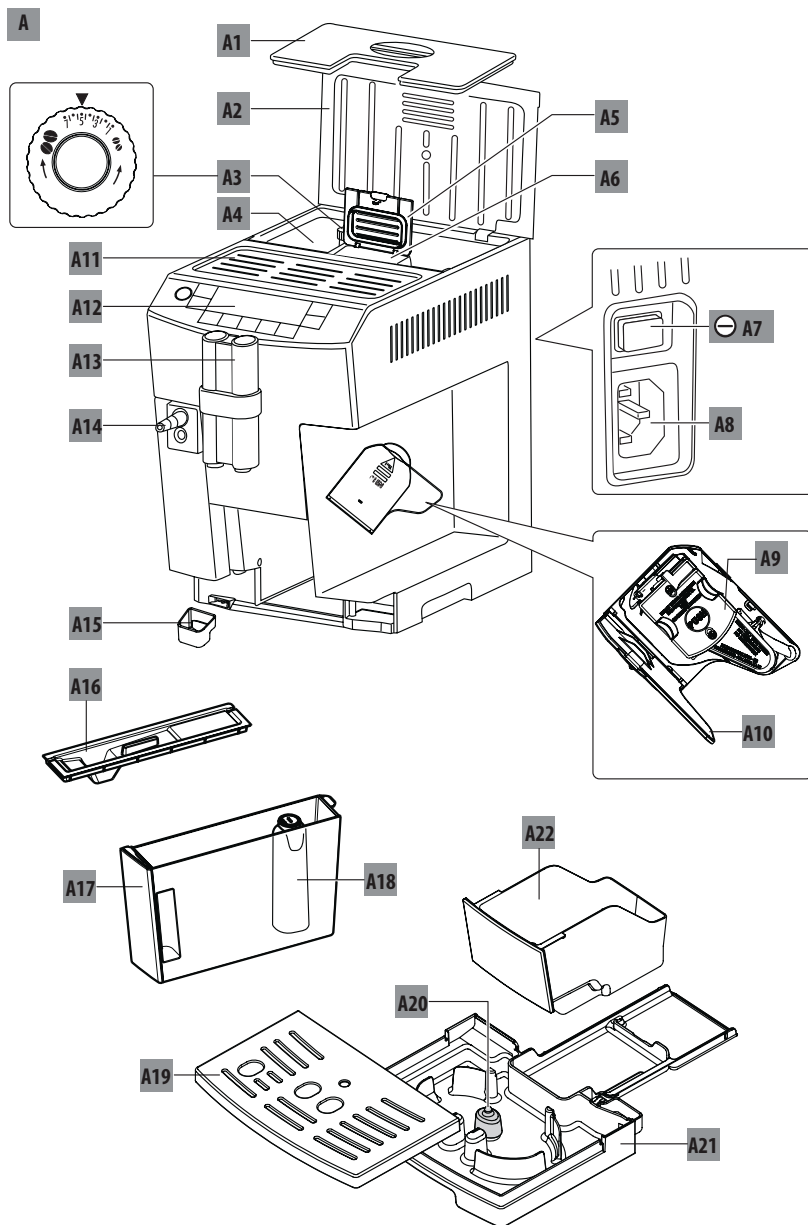
CARACTERISTICAS ELECTRICAS:

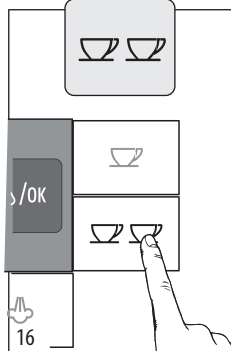
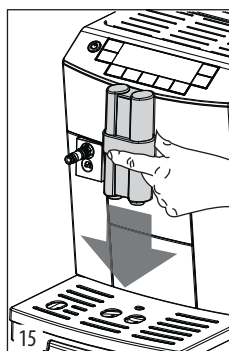
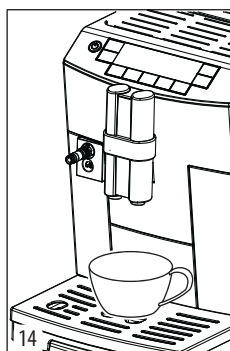
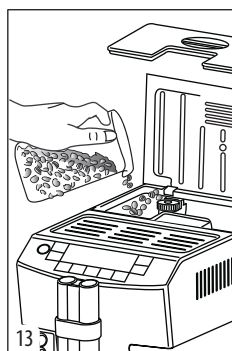
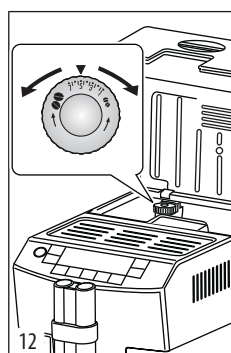
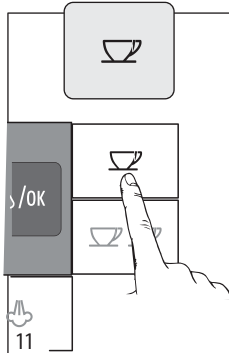
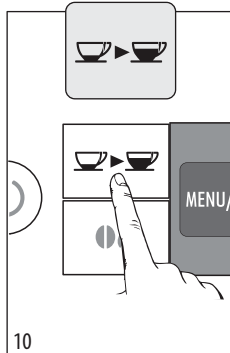
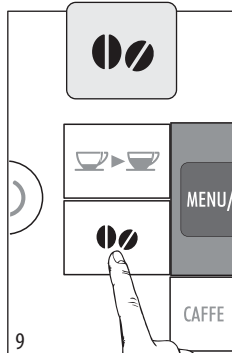
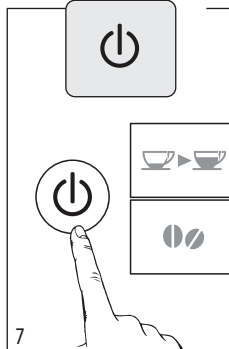
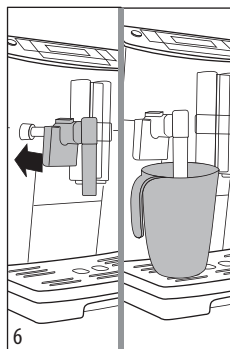
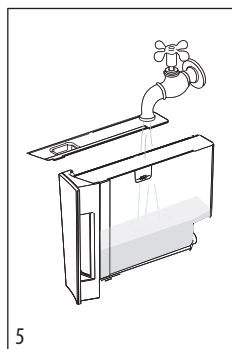
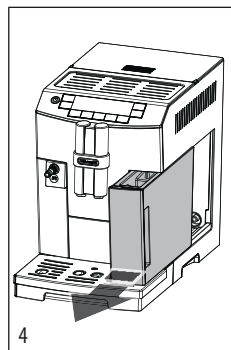
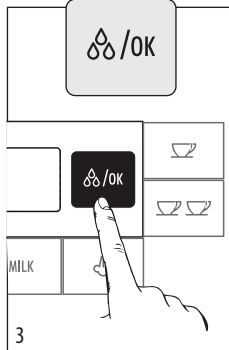
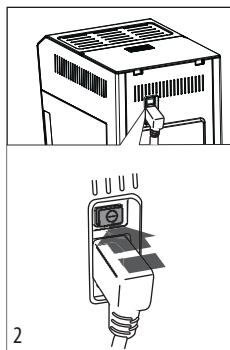
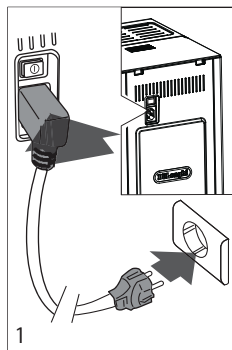
120 V~ 60 Hz 1250 W

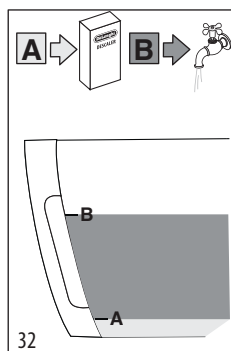
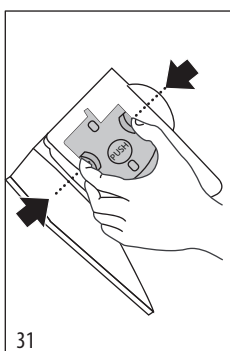
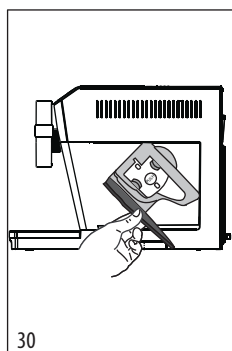
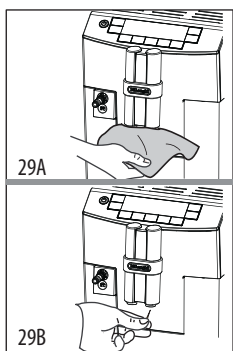
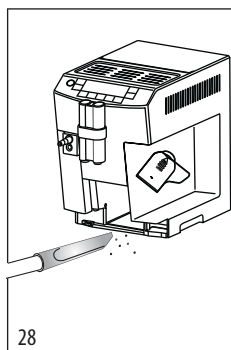
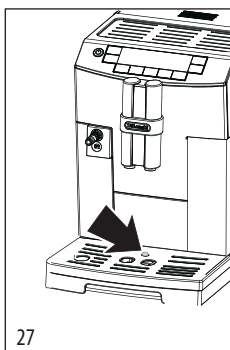
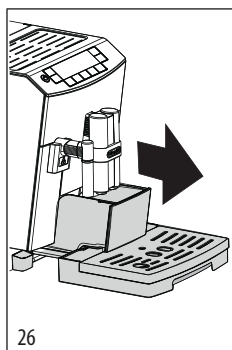
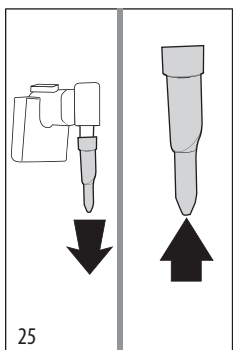
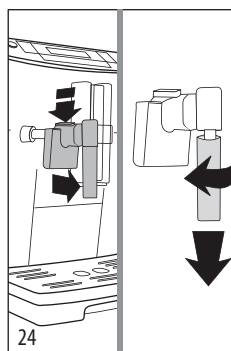
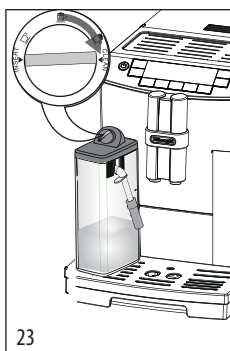
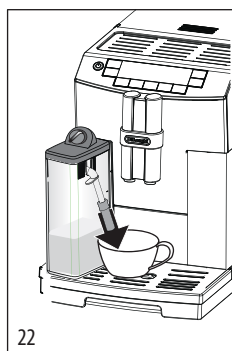
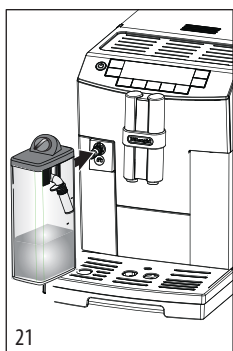
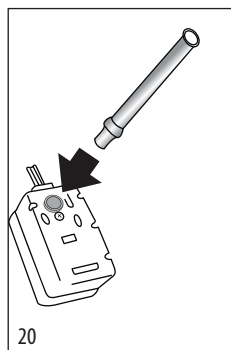
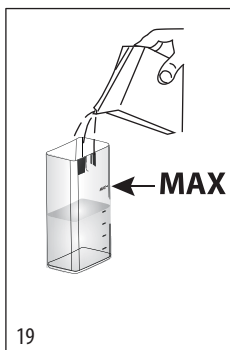
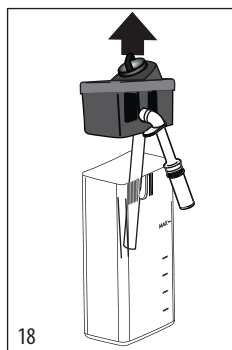
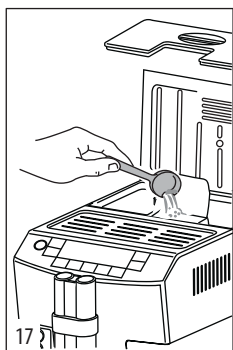


DeLonghi









CONTENTS

IMPORTANT SAFEGUARDS	7
SAVE THESE INSTRUCTIONS	7
SHORT CORD INSTRUCTIONS.....	7
INTRODUCTION	8
Symbols used in these instructions	8
Troubleshooting and repairs	8
DESCRIPTION	8
Description of the appliance	8
Description of the control panel	8
Description of the milk container	9
Description of the accessories	9
PRELIMINARY CHECKS	9
Checking the appliance	9
Installing the appliance	9
Connecting the appliance	9
TURNING THE APPLIANCE ON	10
TURNING THE APPLIANCE OFF	10
MENU SETTINGS	10
Rinsing.....	10
Descalc	10
Install filter	10
Replacing the filter	10
Adjust time	10
Auto-start	10
Auto-Off.....	11
Cup warmer	11
Energy Saving	11
Setting the temperature	11
Setting water hardness	11
Beep	11
Setting the language	12
Cup lighting	12
Default values (reset)	12
Statistics function	12
MAKING COFFEE	12
Selecting the coffee taste.....	12
Selecting the quantity of coffee in the cup	12
Customising the “my coffee” quantity	12
Adjusting the coffee mill	13
Tips for a hotter coffee	13
Making coffee using coffee beans	13
Making coffee using pre-ground coffee	13

MAKING DRINKS WITH MILK.....	14
Filling and attaching the milk container	14
Adjusting the amount of froth	14
Making drinks with milk automatically	14
Cleaning the milk frother with the CLEAN button ...	14
Programming the quantity of coffee and milk in the cup for the CAFFELATTE, CAPPUCINO, MACCHIATO and MILK buttons	15
DELIVERING HOT WATER AND STEAM	15
Delivering hot water	15
Change the quantity of water delivered automatically.	15
Delivering steam	15
Tips for using steam to froth milk.....	15
Cleaning the spout after use	15
CLEANING	16
Cleaning the coffee grounds container	16
Cleaning the drip tray and condensate tray	16
Cleaning the inside of the coffee maker	16
Cleaning the water tank.....	16
Cleaning the coffee spouts	16
Cleaning the pre-ground coffee funnel	16
Cleaning the infuser	17
Cleaning the milk container	17
Cleaning the hot water/steam nozzle	18
DESCALE	18
SETTING WATER HARDNESS	18
Measuring water hardness.....	18
Setting water hardness	19
WATER SOFTENER FILTER	19
Installing the filter	19
Replacing the filter	20
Removing the filter	20
TECHNICAL SPECIFICATION.....	20
DISPLAYED MESSAGES	20
TROUBLESHOOTING	21
LIMITED WARRANTY	23
What does the warranty cover?.....	23
How long does the coverage last?	23
What is not covered by the warranty?	23
How do you get service?	23
How does country law apply?	23

IMPORTANT SAFEGUARDS

When using electrical appliances, basic safety precautions should always be followed, including the following.

- Read all instructions carefully.
- Make sure the voltage of your electrical system corresponds to the voltage shown on the bottom of the machine.
- Do not touch hot surfaces. Use handles or knobs.
- To protect against fire, electrical shock and personal injury, do not immerse cord, plug or appliance in water or other liquid.
- Keep the appliance out of the reach of children and do not leave appliance unattended while in operation.
- Unplug from the outlet when not in use and before cleaning.
- Do not operate with a damaged cord or plug, or after the appliance malfunctions, or has been damaged in any manner. Return the appliance to the nearest authorized service facility for examination, repair or adjustment.
- The use of accessory attachments not recommended by the manufacturer may result in fire, electrical shock, or personal injury.
- Do not use outdoors.
- Make sure the power cord does not hang over the edge of the table or counter-top to avoid getting accidentally caught or entangled.
- Do not place the appliance or its electrical parts on or near electric stoves, cooking surfaces, or gas burners.
- Plug cord into the wall outlet. To disconnect, first turn machine "off", then remove plug from wall outlet.
- Do not use the appliance for other than the intended use. This appliance is to be utilized for domestic use only. The manufacturer declines all responsibility for any damage caused by improper, incorrect, or irresponsible use.

WARNING: To reduce the risk of fire or electric shock, do not remove the cover or the exterior of the unit. Don't attempt to repair or modify the machine, doing so will void the warranty. Repair should be done by authorized service personnel only!

SAVE THESE INSTRUCTIONS

THIS APPLIANCE IS FOR HOUSEHOLD USE ONLY

SHORT CORD INSTRUCTIONS

- A short power cord is provided to reduce risks resulting from becoming entangled in or tripping over a longer cord.
- Longer, detachable power supply cords or extension cords are available and may be used if care is exercised in their use.
- If an extension cord is used, the marked electrical rating should be at least as great as the electrical rating of the appliance. If the appliance is provided with 3- wire, grounding type cord, the extension should be a GROUNDING TYPE 3 - WIRE CORD. The longer cord should be arranged so that it will not drape over the counter-top or table top where it can be pulled on by children or tripped over.
- Your product is equipped with a polarized alternating current line plug (a plug having one blade wider than the other). This plug will fit into the power outlet only one way. This is a safety feature. If you are unable to insert the plug fully into the outlet, try reversing the plug. If the plug should still fail to fit, contact your electrician to replace your obsolete outlet. Do not defeat the safety purpose of the polarized plug.

INTRODUCTION

Thank you for choosing the ECAM28.465 automatic coffee and cappuccino maker.

We hope you enjoy using your new appliance.

Take a few minutes to read these instructions.

This will avoid all risks and damage to the machine.

Symbols used in these instructions

Important warnings are identified by these symbols.

It is vitally important to observe these warnings.



Danger!

Failure to observe the warning could result in life threatening injury from electric shock.



Important!

Failure to observe the warning could result in injury or damage to the appliance.



Danger of burns!

Failure to observe the warning could result in scalds.



Please note:

This symbol identifies important advice or information for the user.

Letters in brackets

The letters in brackets refer to the legend in the Description of the Appliance on page 3.

Troubleshooting and repairs

In the event of problems, first try and resolve them following the information given in the section “Displayed messages” on page 20 and “Troubleshooting” on page 21.

If this does not resolve the problem or you require further information, you should consult Customer Experience by calling the number given on the annexed “Customer Experience” sheet. If your country is not among those listed on the sheet, call the number given in the guarantee.

If repairs are required, contact De'Longhi Customer Experience only.

Contact details are given in the guarantee certificate provided with the appliance.

DESCRIPTION

Description of the appliance







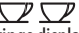
(page 3 - A)

- A1. Beans container lid
- A2. Top lid
- A3. Grinding adjustment dial
- A4. Beans container
- A5. Pre-ground coffee funnel lid with pressure lock
- A6. Pre-ground coffee funnel
- A7. Main switch
- A8. Socket for power cable connector
- A9. Infuser
- A10. Infuser door
- A11. Cup warmer shelf
- A12. Control panel
- A13. Coffee spout (adjustable height)
- A14. Hot water and steam nozzle
- A15. Condensate tray
- A16. Water tank lid
- A17. Water tank
- A18. Water filter (some models only)
- A19. Cup tray
- A20. Drip tray water level indicator
- A21. Drip tray
- A22. Coffee grounds container

Description of the control panel

(page 2 - B)

A number of buttons on the panel have a double function. This is indicated in brackets in the description.

- B1.  button: turns the appliance on and off
- B2.  button: to select the coffee quantity
- B3. **MENU** button to access the menu (*When in the settings MENU, it acts as the “ESC” button to exit from the selected function and go back to the main menu.*)
- B4. Display: guides the user in using the appliance.
- B5.  / **OK** button: to deliver hot water (*When in the settings menu, press to confirm the selection*)
- B6.  button: to make 1 cup of coffee with the settings displayed
- B7.  aroma selection button: to select the coffee taste
- B8. **CAFFELATTE** button: to deliver a caffelatte
- B9. **CAPPUCCINO** button: to deliver a cappuccino (*When in the settings menu, press to scroll backwards*)
- B10. **LATTE MACCHIATO** button: to deliver a macchiato
- B11. **MILK** button: to deliver a cup of milk (*When in the settings menu, press to scroll forwards*)
- B12.  button: to deliver steam
- B13.  button: to make 2 cups of coffee with the settings displayed

Description of the milk container

(page 2 - C)

- D1. Froth adjustment and CLEAN dial
- D2. Frothed milk spout (adjustable)
- D3. Milk intake tube
- D4. Milk container

Description of the accessories

(page 2 - D)

- D1. Pre-ground coffee measure
- D2. Cleaning brush
- A18. Water filter (certain models only)
- D3. Cappuccino maker/hot water spout
- D4. Power cable
- D5. "Total Hardness Test" indicator paper
- D6. Descaler

PRELIMINARY CHECKS

Checking the appliance

After removing the packaging, make sure the product is complete and undamaged and that all accessories are present.

Do not use the appliance if it is visibly damaged.

Contact De'Longhi Customer Experience.

Installing the appliance



Important!

When installing the appliance, respect the following safety warnings:

- The appliance gives off heat.
After positioning the appliance on the worktop, leave a space of at least 1.18 in / 3 cm between the surfaces of the appliance and the side and rear walls and at least 5.9 in / 15 cm above the coffee maker.
- Water penetrating the coffee maker could cause damage.
Do not place the appliance near taps or sinks.
- The appliance could be damaged if the water it contains freezes.
Do not install the appliance in a room where the temperature could drop below freezing point.
- Arrange the power cable in such a way that it cannot be damaged by sharp edges or contact with hot surfaces (e.g. electric hot plates).

Connecting the appliance



Important!

Check that the mains power supply voltage corresponds to the value indicated on the rating plate on the bottom of the appliance.

If the power socket does not match the plug on the appliance, have the socket replaced with a suitable type by a qualified professional.

Using the appliance for the first time



Please note!

- Coffee has been used to factory test the appliance and it is therefore completely normal for there to be traces of coffee in the mill.
The machine is, however, guaranteed to be new.
 - You should customise water hardness as soon as possible following the instructions in the section "Setting water hardness" (page 18).
1. Insert the power cable connector into the socket at the back of the appliance and connect the appliance to the mains electricity supply (fig. 1). Make sure the main switch at the back of the appliance is pressed (fig. 2).
Select the desired language by scrolling forwards or backwards using the **CAPPUCCINO** or **MILK** or alternatively waiting for the language options to scroll automatically on the display (about every 3 seconds):
 2. When "English" appears, press and hold the ⏏ button (fig. 3) for a few seconds until "English set" is displayed.
Follow the instructions displayed by the appliance:
 3. "FILL TANK!": remove the water tank (fig. 4), open the lid, fill to the MAX line with fresh water (fig. 5); close the water tank lid and replace the water tank.
 4. "INSERT WATER SPOUT!": Check that the hot water spout is inserted on the nozzle and place a container (fig. 6) with a minimum capacity of 100 ml underneath.
 5. "HOT WATER, Press OK" is displayed;
 6. Press the ⏏ button to confirm (fig. 3): the appliance delivers water from the spout then goes off automatically.

The coffee maker is now ready for normal use.



Please note!

- When using the appliance for the first time, you need to make 4-5 cups of coffee or 4-5 cappuccinos before the appliance starts to give satisfactory results.
- When making the first 5-6 cappuccinos, it is normal to hear the noise of boiling water. After this, the noise becomes less.
- To enjoy your coffee even more and improve the performance of your appliance, we recommend installing a water

softener filter as described in the section “WATER SOFTENER FILTER” (page 19). If your model is not provided with a filter, you can request one from De’Longhi Customer Services.

TURNING THE APPLIANCE ON



Please note!

Before turning the appliance on, make sure the main switch is pressed (fig. 2).

Each time the appliance is turned on, it performs an automatic preheat and rinse cycle which cannot be interrupted.


The appliance is ready for use only after completion of this cycle.



Danger of burns!

During rinsing, a little hot water comes out of the coffee spouts and is collected in the drip tray underneath.

Avoid contact with splashes of water.

- To turn the appliance on, press the  button (fig. 7).
The message “Heating up, Please wait” is displayed.

After heating, the message “RINSING” is displayed. As well as heating the boiler, the appliance also heats the internal circuits by circulating hot water.

The appliance is at temperature when the message indicating the taste and quantity of coffee appears.

TURNING THE APPLIANCE OFF


Whenever the coffee machine is turned off after being used to make coffee, it performs an automatic rinse cycle.



Danger of burns!

During rinsing, a little hot water flows from the coffee spouts.


Avoid contact with splashes of water.

To turn the appliance off, press the  button (fig. 7). The appliance performs a rinse cycle, then the message “Turning off underway Please wait...” is displayed and the appliance goes off (standby).



Please note!

If the appliance is not used for an extended period, switch off the machine at the main switch.

- first turn the appliance off by pressing the  button (fig. 7);
- release the main switch at the side of the appliance (fig. 2).



Important!

Never press the main switch while the appliance is on.



MENU SETTINGS

When you access the programming menu by pressing the **MENU/ESC** button, the following menu items are available:

Rinsing

Use this function to deliver hot water from the spout to heat the internal circuit and make the coffee delivered hotter.

To enable the function, proceed as follows:

1. Press the **MENU/ESC** button to enter the menu;
2. Press the **MILK** or **CAPPUCCINO** button (fig. 8) until “Rinsing” is displayed;
3. Press the  button. The message “Confirm?” is displayed;
4. Press the  button (fig. 3): after a few seconds, hot water flows out of the spout, heating the internal circuit and making the coffee delivered hotter.



Please note!

Press any button to stop hot water delivery at any time.

Descale

For instructions on descaling, see page 18.

Install filter


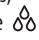
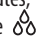
For instructions on how to install the filter, see the section “Installing the filter” (page 19).

Replacing the filter

For instructions on how to replace the filter, see the section “Replacing the filter” (page 20).

Adjust time

To adjust the time on the display, proceed as follows:

1. Press the **MENU/ESC** button to enter the menu;
2. Press the **MILK** or **CAPPUCCINO** button (fig. 8) until “Adjust time” is displayed;
3. Press the  button (fig. 3);
4. Press the **MILK** or **CAPPUCCINO** button (fig. 8) to change the hours;
5. Press the  button to confirm;
6. Press the **MILK** or **CAPPUCCINO** button (fig. 8) to change the minutes;
7. Press the  button to confirm.

This sets the time. Press the **MENU/ESC** button to exit the menu.

Auto-start





You can set the auto-start time in order to have the appliance ready at a certain time (for example in the morning) so you can make coffee immediately.




Please note!



To enable this function, the time must already have been set correctly.


To enable Auto-on, proceed as follows:

1. Press the **MENU/ESC** button to enter the menu;
2. Press the **MILK** or **CAPPUCCINO** button (fig. 8) until "Auto-start" is displayed;
3. Press the /OK button. "Enable?" is displayed;
4. Press the /OK button to confirm;
5. Press the **MILK** or **CAPPUCCINO** button (fig. 8) to change the hours;
6. Press the /OK button to confirm;
7. Press the **MILK** or **CAPPUCCINO** button (fig. 8) to change the minutes;
8. Press the /OK button to confirm;
9. Press the **MENU/ESC** button to exit the menu.

Once the time has been confirmed, enabling of auto-start is indicated by the  symbol displayed alongside the time and under the Auto-start item in the menu.

To disable the function:



1. Select auto-start from the menu;
2. Press the /OK button. "Disable?" is displayed;
3. Press the /OK button to confirm.

The  symbol is no longer displayed.

Auto-off

The time can be changed so that the appliance switches off after 15 or 30 minutes, or after 1, 2 or 3 hours.

To re-programme Auto-off, proceed as follows:



1. Press the **MENU/ESC** button to enter the menu;
2. Press the **MILK** or **CAPPUCCINO** button (fig. 8) until "Auto-off" is displayed;
3. Press the /OK button;
4. Press the **MILK** or **CAPPUCCINO** button (fig. 8) until the desired operation time is displayed (15 or 30 minutes, or 1, 2 or 3 hours);
5. Press the /OK button to confirm;
6. Press the **MENU/ESC** button to exit the menu.

Auto-off is programmed.

Cup warmer

This function enables or disables the cup warmer.

Proceed as follows:

1. Press the **MENU/ESC** button to enter the menu;
2. Press the **MILK** or **CAPPUCCINO** button (fig. 8) until "Cup warmer" appears on the display;
3. Press the /OK button. "Disable?" is displayed (or "Enable?" if the function has been disabled);
4. Press the /OK button to disable (or enable) the function.
5. Press the **MENU/ESC** button to exit the menu.

Warming the cups keeps the coffee hot.

Energy saving

Use this function to enable or disable energy saving mode.

When enabled, the function reduces energy consumption in compliance with European regulations.

To disable (or enable) "energy saving" mode, proceed as follows:

1. Press the **MENU/ESC** button to enter the menu;
2. Press the **MILK** or **CAPPUCCINO** button (fig. 8) until "Energy saving" is displayed;
3. Press the /OK button. "Disable?" is displayed (or "Enable?" if the function has been disabled);
4. Press the /OK button to disable (or enable) energy saving mode;
5. Then press the **MENU/ESC** button to exit the menu.

When the function is enabled, if the machine is not used for about 1 minute, "Energy Saving" is displayed.





Please note!

- When in energy saving mode, a few seconds elapse before the first coffee, cappuccino or milk based coffee is delivered as the appliance must heat up again.
- To prepare any drink, press any button to exit energy saving, then press the button corresponding to the drink you want to make.
- If the milk container is inserted, "Energy saving" is not activated.

Setting the temperature

To modify the temperature of the water used to make the coffee, proceed as follows:


1. Press the **MENU/ESC** button to enter the menu;
2. Press the **MILK** or **CAPPUCCINO** button (fig. 8) until "Set temperature" is displayed;
3. Press the /OK button;
4. Press the **MILK** or **CAPPUCCINO** button until the required temperature (● = low; ●●●● = high) is displayed;
5. Press the /OK button to confirm;
6. Press the **MENU/ESC** button to exit the menu.

Setting water hardness

For instructions on setting water hardness, see page 18.

Setting the language

To change the language for the display, proceed as follows:

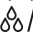
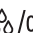
1. Press the **MENU/ESC** button to enter the menu;
2. Press the **MILK** or **CAPPUCCINO** button (fig. 8) until "Set language" is displayed;
3. Press the /OK button;
4. Press the **MILK** or **CAPPUCCINO** button until the required language is displayed;
5. Press the /OK button to confirm;

6. A message confirming the language installed is displayed;
7. Then press the **MENU/ESC** button to exit the menu.

Beep

This enables or disables the beep emitted by the machine each time the buttons are pressed or an accessory is inserted/removed. The beep is enabled by default.

To disable or re-enable the beep, proceed as follows:



1. Press the **MENU/ESC** button to enter the menu;
2. Press the **MILK** or **CAPPUCCINO** button (fig. 8) until "Beep" is displayed;
3. Press the /OK button. "Disable?" or "Enable?" is displayed;
4. Press the /OK button to enable or disable the beep;
5. Press the **MENU/ESC** button to exit the menu.

Cup lighting

This function enables or disables the cup lighting. The lighting is enabled by default.

The lights come on each time coffee and drinks with milk are made and during each rinse cycle.

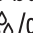
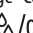
To disable or re-enable this function, proceed as follows:

1. Press the **MENU/ESC** button to enter the menu;
2. Press the **MILK** or **CAPPUCCINO** button (fig. 8) until "Cup lighting" is displayed.
3. Press the /OK button. "Disable?" or "Enable?" is displayed;
4. Press the /OK button to enable or disable the cup lighting;
5. Press the **MENU/ESC** button to exit the menu.

Default values (reset)

This resets all menu settings and programmed quantities back to the default values (with the exception of the language which remains as previously set).

To reset the default values, proceed as follows:


1. Press the **MENU/ESC** button to enter the menu;
2. Press the **MILK** or **CAPPUCCINO** button (fig. 8) until "Default values" is displayed;
3. Press the /OK button;
4. The message "Confirm?" is displayed.
5. Press the /OK button to confirm and exit.

Statistics function

This displays statistics relating to the machine.

To display, proceed as follows:

1. Press the **MENU/ESC** button to enter the menu;
2. Press the **MILK** or **CAPPUCCINO** button (fig. 8) until "Statistics" is displayed;

3. Press the /OK button;
4. Press the **MILK** or **CAPPUCCINO** button (fig. 8) to verify:
 - how many coffees have been made;
 - the total number of cappuccinos and milk based coffees made;
 - the total number of litres of water delivered;
 - how many times the machine has been descaled;
 - how many times the water softener filter has been replaced.
5. Press the **MENU/ESC** button twice to exit the menu.

MAKING COFFEE

Selecting the coffee taste

The appliance is set by default to make coffee with a standard taste.

You can also choose one of these tastes:

Extra-mild taste

Mild taste

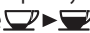
Standard taste

Strong taste

Extra-strong taste

To change the taste, press the  button (fig. 9) repeatedly until the required taste is displayed.

Selecting the quantity of coffee in the cup

The appliance is set by default to make a standard quantity of coffee. To select the quantity of coffee, press the  button (fig. 10) until the message corresponding to the required quantity of coffee is displayed:



Coffee selected	Quantity in cup (ml)
MY COFFEE	Programmable: from ≈20 to ≈180
SHORT	≈40
STANDARD	≈60
LONG	≈90
EXTRA LONG	≈120

Customising the "my coffee" quantity

The appliance is set by default to automatically deliver 30 ml of "my coffee".

To modify this quantity, proceed as follows:

1. Place a cup under the coffee spouts (fig. 14).
2. Press the  button (fig. 10) until "MY COFFEE" is displayed.

3. Keep the  button (fig. 11) pressed until the message "1 MY COFFEE Program quantity" is displayed and coffee delivery begins. Release the button.
 4. As soon as the coffee in the cup reaches the required level, press the button  (fig. 11) again.
- The quantity of coffee in the cup has now been programmed.

Adjusting the coffee mill

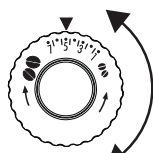
The coffee mill is preset in the factory to make coffee correctly and should not require adjusting initially.

However, if after making the first few coffees you find that the coffee is too thin and not creamy enough or that delivery is too slow (a drop at a time), this can be corrected by adjusting the grinding adjustment dial (fig. 12).



Please note!

The grinding adjustment dial must only be turned when the coffee mill is in operation.



If the coffee is delivered too slowly or not at all, turn one click clockwise towards "7".

For fuller bodied creamier coffee on the other hand, turn one click anticlockwise towards "1" (do not turn more than one click at a time otherwise the coffee could

be delivered a drop at a time).

These adjustments will only be evident after at least 2 cups of coffee have been delivered.

If this adjustment does not obtain the desired result, turn the dial another click.

Tips for a hotter coffee

For a hotter coffee, before delivery you are recommended to:

- perform a rinse cycle by selecting the "Rinsing" function in the settings menu (page 10)
- warm the cups with hot water (using the hot water function);
- increase the coffee temperature in the settings menu (page 11).


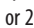

Making coffee using coffee beans



Important!

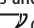
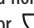
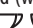
Do not use caramelised or candied coffee beans as they could stick to the coffee mill and make it unusable.

1. Place coffee beans in the coffee bean container (fig. 13).
2. Place under the coffee dispensing spouts, either:
 - 1 cup if you want one coffee (fig. 14);
 - 2 cups if you want 2 coffees.

3. Lower the spouts as near as possible to the cup. This makes a creamier coffee (fig. 15).
4. Press the button corresponding to the number of coffees required (1 cup  or 2 cups   , figs. 11 and 16).
5. Preparation begins. The amount of coffee selected is displayed together with a progress bar which gradually fills as preparation progresses.



Please note:

- While the machine is making coffee, delivery can be interrupted at any moment by pressing any button.
- At the end of delivery, to increase the quantity of coffee in the cup, just press and hold (within 3 seconds) one of the coffee buttons ( or  ).

Once the coffee has been made, the appliance is ready to make the next drink.



Please note!

- Various alarm messages could be displayed while using the machine (FILL TANK, EMPTY GROUNDS CONTAINER, etc.). Their meaning is explained in the section "Displayed messages" (page 20).
- For hotter coffee, see the section "Tips for a hotter coffee" (page 13).
- If the coffee is delivered a drop at a time, too weak and not creamy enough or too cold, read the tips in the "Troubleshooting" section on page 21.

Making coffee using pre-ground coffee





Important!

- Never add pre-ground coffee when the machine is off or it could spread through the inside of the machine and dirty it.
This could damage the appliance.
- Never use more than 1 level measure or it could dirty the inside of the coffee maker or block the funnel.



Please note!

If you use pre-ground coffee, you can only make one cup of coffee at a time.

1. Press the  button (fig. 9) repeatedly until "Pre-ground" is displayed.
2. Open the beans container lid; then open the pre-ground coffee funnel lid by pushing on PUSH and, once released, open the lid.
3. Make sure the funnel is not blocked, then add one level measure of pre-ground coffee (fig. 17).
4. Place a cup under the coffee spouts.
5. Press the 1 cup coffee button  (fig. 11).

- Preparation begins. The amount of coffee selected is displayed together with a progress bar which gradually fills as preparation progresses.



Please note!

If “Energy saving” mode is enabled, you may have to wait a few seconds before the first coffee is delivered.

MAKING DRINKS WITH MILK



Please note!

- To avoid producing milk with poor froth or large bubbles, always clean the milk container lid and hot water nozzle as described in the section “Cleaning the milk container” on pages 14.

Filling and attaching the milk container

- Remove the lid (fig. 18);
- Fill the milk container with a sufficient quantity of milk, not exceeding the MAX level marked on the container (fig. 19). Each mark on the side of the container corresponds to 100 ml of milk.



Please note!

- For a denser more even froth, you should use skimmed or partially skimmed milk at refrigerator temperature (about 5°C).
 - If “energy saving” mode is enabled, you may have to wait a few seconds before the first cappuccino is delivered.
- Make sure the milk intake tube is correctly inserted in the bottom of the milk container lid (fig. 20).
 - Place the lid back on the milk container.
 - Remove the hot water spout from the nozzle, by pressing the button.
 - Attach the container to the nozzle and push as far as it will go (fig. 21). The machine emits a beep (if the beep function is enabled).
 - Place a sufficiently large cup under the coffee and frothed milk spouts. Adjust the length of the milk spout. To move it nearer the cup, simply pull it downwards (fig. 22).
 - Follow the instructions below for each function.

Adjusting the amount of froth

Turn the froth adjustment dial on the milk container lid to adjust the amount of froth on the milk delivered while making drinks with milk.

Dial position	Description	Recommended for...
	No froth	CAFFELATTE / MILK (hot milk)

	Min. froth	MACCHIATO
	Max. froth	CAPPUCCINO/MILK (FROTHED MILK)

Making drinks with milk automatically

The CAFFELATTE, CAPPUCCINO, MACCHIATO and MILK buttons on the control panel enable these drinks to be prepared automatically.

Proceed as follows:

- Fill the milk container and attach it as described above.
- Turn the froth adjustment dial on the milk container lid to the position corresponding to the required froth.
- Press the button corresponding to the required drink. The name of the drink selected is displayed together with a progress bar which gradually fills as preparation progresses.
- After a few seconds, frothed milk is delivered from the milk spout into the cup below. For drinks with coffee, the machine automatically makes the coffee after delivering the milk.



Please note!

- If during delivery you want to stop preparation, press the corresponding button.
- At the end of delivery, to increase the quantity of milk or coffee in the cup, just press and hold (within 3 seconds) the button corresponding to the drink being made.
- Do not leave the milk container out of the refrigerator for long periods. The warmer the milk (5°C is ideal), the poorer the quality of froth produced.

Cleaning the milk frother with the CLEAN button



Important! Danger of burns

When cleaning the internal tubes of the milk container, a little hot water and steam leak out of the frothed milk spout. Avoid contact with splashes of water.

“SET DIAL TO CLEAN” flashes on the display each time you use a milk function. To eliminate all milk residues, proceed as follows:

- Leave the milk container in the machine (you do not need to empty it);
- Place a cup or other recipient under the frothed milk spout.
- Turn the froth adjustment dial to “CLEAN” (fig. 23). A progress bar appears and gradually fills as the operation proceeds together with “Cleaning underway”. Cleaning stops automatically.
- Turn the dial back to one of the froth selections.

5. Remove the milk container and always clean the steam connection nozzle with a sponge (see fig. 39, pag. 18).



Please note!

- To prepare a number of cappuccinos or milk based coffees, clean the milk container after you have prepared the last drink only.
- The milk container can be kept in the refrigerator.
- In some cases, to clean you must wait for the appliance to heat up.

Programming the quantity of coffee and milk in the cup for the CAFFELATTE, CAPPUCCINO, MACCHIATO and MILK buttons

The appliance is set by default to automatically deliver standard quantities.

To change these quantities, proceed as follows:

1. Place a cup under the coffee and milk spouts.
2. Press and hold the button relative to the milk drink to customize until the message "PROGRAM MILK Program quantity" is displayed.
3. Release the button.
The appliance starts delivering milk.
4. Once the required quantity of milk has been delivered into the cup, press the button again.
5. The appliance stops delivering milk and after a few seconds the coffee is delivered into the cup. "PROGRAM COFFEE Program quantity" is displayed.
6. Once the required quantity of coffee has been delivered into the cup, press the button.
Coffee delivery stops.

The machine is now reprogrammed with the new quantities of milk and coffee.

DELIVERING HOT WATER AND STEAM



Important! Danger of burns.

Never leave the machine unsupervised while delivering hot water or steam.


The spout becomes hot during delivery. Hold by the handle only.




Please note!

If "Energy Saving" mode is enabled, you may have to wait a few seconds before the hot water or steam is delivered.

Delivering hot water


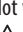

1. Make sure the hot water spout is attached correctly (fig. 6).
2. Place a container under the spout (as close as possible to avoid splashes).
3. Press the /OK button (fig. 3). "Hot water" is displayed, together with a progress bar which fills gradually as preparation proceeds.

4. The machine delivers 250 ml of hot water, then delivery stops automatically.

To interrupt delivery of hot water manually, press the /OK button again.



Change the quantity of water delivered automatically.

The machine is set by default to automatically delivery 250 ml of hot water. To modify these quantities, proceed as follows:

1. Position a container under the spout.
2. Press the /OK button again until "Hot water Program quantity" is displayed, then release the /OK button.
3. When the hot water in the cup reaches the required level, press the /OK button again.

The machine is now reprogrammed with the new quantity.

Delivering steam

1. Make sure the hot water spout is attached correctly (fig. 6).
2. Fill a container with the liquid to be heated/frothed and immerse the spout/cappuccino maker in the liquid.
3. Press the  button: after a few seconds, steam comes out of the cappuccino maker and heats the liquid; "STEAM" is displayed.
4. When the required temperature is obtained, interrupt steam delivery by pressing the  button again.
(You should not discharge steam for more than 3 minutes at a time).



Important!



Always stop steam delivery before extracting the container containing the liquid to avoid burns from splashes.

Tips for using steam to froth milk

- When choosing the size of the container, bear in mind that the liquid doubles or triples in volume.
- For a richer denser froth, use skimmed or partially skimmed milk at refrigerator temperature (about 41°F/5°C).
- For a creamier froth, rotate the container with slow movements in an upward direction.
- To avoid milk with poor froth or large bubbles, always clean the spout as described in the following section.

Cleaning the spout after use

Always clean the spout after use to avoid the build-up of milk residues and prevent the spout from clogging.

1. Place a container under the cappuccino maker and press the /OK button to deliver a little water (fig. 3). Stop the flow of water by pressing the /OK button again.

2. Wait a few minutes for the cappuccino maker to cool down, then extract the hot water spout.
Hold the spout with one hand by pressing the button and with the other, turn the cappuccino maker anticlockwise (fig. 24) and pull it downwards to remove it.
3. Also remove the steam nozzle by pulling it downwards (fig. 25).
4. Check the hole shown by the arrow in fig. 25 is not blocked. If necessary, clean with a pin.
5. Wash all parts of the cappuccino maker thoroughly with a sponge and warm water.
6. Reinsert the nozzle and replace the cappuccino maker on the nozzle, turning it and pushing it upwards until it is attached.

CLEANING

Important!

- Do not use solvents, abrasive detergents or alcohol to clean the coffee maker.
With De'Longhi bean to cup coffee makers, you need not use chemical products to clean the machine.
- None of the components can be washed in a dishwasher apart from the milk container (D).
- Do not use metal objects to remove encrustations or coffee deposits as they could scratch metal or plastic surfaces.

Cleaning the coffee grounds container

When "EMPTY GROUNDS CONTAINER" is displayed, the grounds container must be emptied and cleaned.

Until the grounds container has been cleaned, the appliance continues to display the message and coffee cannot be made.

Important! Danger of burns

If you make a number of cappuccinos one after the other, the metal cup tray becomes hot.

Wait for it to cool down before touching it and handle it from the front only.

To clean (with the machine on):

- Remove the drip tray (fig. 26), empty and clean.
- Empty the grounds container and clean thoroughly to remove all residues left on the bottom. This can be done with the spatula on the brush provided.
- Check the condensate tray (red) and empty if necessary.

Important!

When removing the drip tray, the grounds container must be emptied, even if it contains few grounds.

If this is not done, when you make the next coffees, the grounds container may fill up more than expected and clog the machine.

Cleaning the drip tray and condensate tray

Important!

The drip tray is fitted with a level indicator (red) showing the level of water it contains (fig. 27).

Before the indicator protrudes from the cup tray, the drip tray must be emptied and cleaned, otherwise the water may overflow the edge and damage the appliance, the surface it rests on or the surrounding area.

To remove the drip tray:

1. Remove the drip tray and the grounds container (fig. 26);
2. Empty the drip tray and grounds container and wash them;
3. Check the red condensate tray and empty if necessary.
4. Replace the drip tray and grounds container.

Cleaning the inside of the coffee maker

Danger of electric shock!

Before cleaning internal parts, the machine must be turned off (see "Turning off") and unplugged from the mains power supply.

Never immerse the coffee maker in water.

1. Check regularly (about once a month) that the inside of the appliance (accessible after removing the drip tray) is not dirty. If necessary, remove coffee deposits with the brush provided or a sponge.
2. Remove the residues with a vacuum cleaner (fig. 28).

Cleaning the water tank

1. Clean the water tank (A17) regularly (about once a month and whenever you replace the water softener filter (if provided) with a damp cloth and a little mild washing up liquid.
2. Remove the filter (if present) and rinse with running water.
3. Replace the filter (if provided), fill the tank with fresh water and replace the tank.

Cleaning the coffee spouts

1. Regularly clean the coffee spouts with a sponge or cloth (fig. 29A).
2. Check the holes in the coffee spout are not blocked. If necessary, remove coffee deposits with a toothpick (fig. 29B).

Cleaning the pre-ground coffee funnel

Check regularly (about once a month) that the pre-ground coffee funnel (A6) is not blocked. If necessary, remove coffee deposits with the brush (D2) supplied.

Cleaning the infuser

The infuser (A9) must be cleaned at least once a month.



Important!

The infuser may not be extracted when the machine is on.

1. Make sure the machine is correctly turned off (see "Turning the appliance off" on page 10).
2. Remove the water tank.
3. Open the infuser door (fig. 30) on the right side.
4. Press the two red release buttons inwards and at the same time pull the infuser outwards (fig. 31).
5. Soak the infuser in water for about 5 minutes, then rinse under the tap.



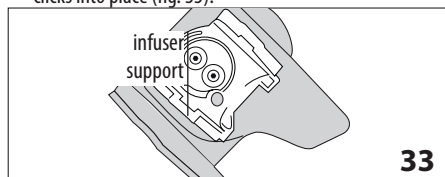
Important!

RINSE WITH WATER ONLY

NO WASHING UP LIQUID - NO DISH WASHER

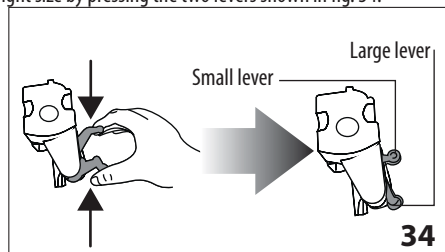
Clean the infuser without using washing up liquid as it could be damaged.

6. Use the brush (D2) to remove any coffee residues left in the infuser housing, visible through the infuser door.
7. After cleaning, replace the infuser by sliding it onto the internal support; then push the PUSH symbol fully in until it clicks into place (fig. 33).

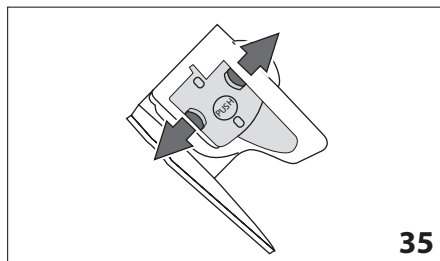


Please note!

If the infuser is difficult to insert, before insertion, adapt it to the right size by pressing the two levers shown in fig. 34.



8. Once inserted, make sure the two red buttons have snapped out (fig. 35).

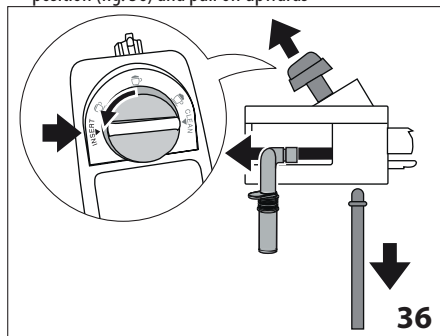


9. Close the infuser door.
10. Replace the water tank.

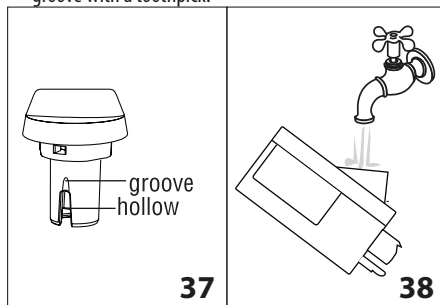
Cleaning the milk container

Clean the milk container every two days as described below:

1. Remove the lid.
2. Remove the milk spout and intake tube.
3. Turn the froth adjustment dial clockwise to the "INSERT" position (fig. 36) and pull off upwards



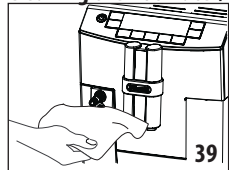
4. Wash all the components thoroughly with hot water and mild washing-up liquid. All components are dishwasher safe, placing them in the top basket of the dishwasher. Make sure there are no milk residues on the hollow and groove under the dial (see fig. 37). If necessary, scrape the groove with a toothpick.



5. Rinse inside the froth adjustment dial seat with running water (fig. 38).

6. Check that the intake tube and spout are not clogged with milk residues.
7. Replace the dial (in correspondence to the word "INSERT"), spout and milk intake tube.
8. Place the lid back on the milk container.

Cleaning the hot water/steam nozzle



Each time you prepare milk, clean the nozzle with a sponge to remove milk residues from the gaskets (see fig. 39).

DESCALE

Descal the machine when the message "DESCALE" flashes on the display.



Important!

- Descaler contains acids which may irritate the skin and eyes. It is vital to respect the manufacturer's safety warnings given on the descaler pack and the warnings relating to the procedure to follow in the event of contact with the skin and eyes.
- You should use De'Longhi descaler only. Using unsuitable descaler and/or performing descaling incorrectly may result in faults not covered by the manufacturer's guarantee.

1. Turn the machine on.
2. Press the **MENU/ESC** button to enter the menu.
3. Press the **MILK** or **CAPPUCCINO** button until "Descal" is displayed.
4. Select by pressing the $\Delta\Delta$ /OK button: "Descal Confirm?" is displayed. Press $\Delta\Delta$ /OK again to enable the function.
5. The message "Add descaler Confirm?" is displayed, alternating with "EMPTY THE DRIP TRAY" and "REMOVE FILTER" (if the filter is present).
6. Completely empty the water tank (A17) and remove the water filter (if present). Empty the drip tray (fig. 26) and grounds container, then put back in the appliance.
7. Pour the descaler into the tank up to the level **A** (corresponding to a 3.4 fl oz/100 ml pack) marked on the side of the tank (fig. 32), then add water (34 fl oz / one litre) up to level **B** (fig. 32). replace the water tank.
8. Place an empty container with a minimum capacity of 51 fl oz / 1.5 litres under the hot water spout (fig. 6).



Important! Danger of burns

Hot water containing acid flows from the spout. Avoid contact with splashes of water.

9. Press the $\Delta\Delta$ /OK button to confirm that you have added the solution.
The message "Descal underway" is displayed.
The descale programme starts and the descaler liquid comes out of the water spout.
The descale programme automatically performs a series of rinses and pauses to remove limescale deposits from inside the machine.

After about 30 minutes, the message "Rinsing" "INSERT FILTER" (if present), "FILL TANK" is displayed.

10. The appliance is now ready for rinsing through with clean water. Extract the water tank, empty, rinse under running water, fill with clean water up to the MAX level, insert the filter (if removed previously) and put the water tank back in the machine. "Rinsing Confirm?" is displayed.
11. Empty the container used to collect the descaler solution and replace it empty under the cappuccino maker.
12. Press the $\Delta\Delta$ /OK button to start rinsing. Hot water flows out of the spout and the message "Rinsing Please wait" is displayed.
13. When the water tank is completely empty, the message "Rinsing complete Confirm?" is displayed.
14. Press the $\Delta\Delta$ /OK button.
15. "Heating up Please wait" is displayed, at the end of which the machine will be ready for use.

SETTING WATER HARDNESS

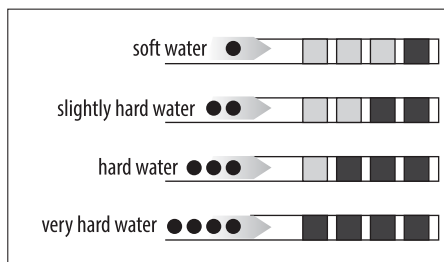
The DESCALE message is displayed after a period of time according to water hardness.

The machine is factory set for a hardness value of 4.

The machine can also be programmed according to the hardness of the mains water in the various regions so that the machine needs to be descaled less often.

Measuring water hardness

1. Remove the "total hardness test" indicator paper attached to this manual from its pack.
2. Immerse the paper completely in a glass of water for one second.
3. Remove the paper from the water and shake lightly.
After about a minute, 1, 2, 3, or 4 red squares form, depending on the hardness of the water. each square corresponds to one level.



Setting water hardness

1. Press the **MENU/ESC** button to enter the menu.
2. Press **MILK** or **CAPPUCCINO** to select "Water hardness".
3. Press the **OK** button to confirm the selection.
4. Press **MILK** or **CAPPUCCINO** and set the hardness level as measured by the indicator strip (see the fig. in the previous paragraph).
5. Press the **OK** button to confirm the setting.
6. Press the **MENU/ESC** button to exit the menu.

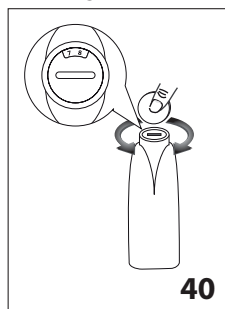
The machine is now reprogrammed with the new water hardness setting.

WATER SOFTENER FILTER

Certain models are fitted with a water softener filter. If this is not the case with your model, you are recommended to purchase one from De'Longhi Customer Services.

To use the filter correctly, follow the instructions below.

Installing the filter



1. Remove the filter from the packaging.
2. Turn the date indicator disk (fig. 40) until the next two months of use are displayed.

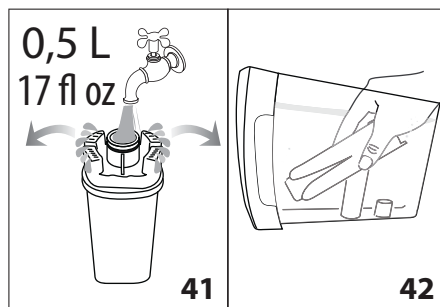


Please note

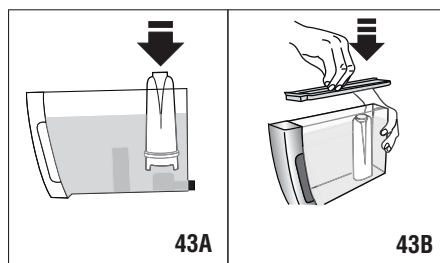
The filter lasts about two months if the appliance is used normally. If the coffee machine is left unused with the filter in-

stalled, it will last a maximum of three weeks.

3. To activate the filter, run tap water through the hole in the filter as shown in the figure until water comes out of the openings at the side for more than a minute (fig. 41).



4. Extract the tank from the appliance and fill with water.
5. Insert the filter in the water tank and immerse it completely for about ten minutes, sloping it to enable the air bubbles to escape (fig. 42).
6. Insert the filter in the filter housing and press as far as it will go (fig. 43A)
7. Close the tank with the lid, then put the tank back in the machine (fig. 43B).





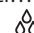
When you install the filter, you must notify the appliance of its presence.

8. Press the **MENU/ESC** button to enter the menu;
8. Press the **MILK** or **CAPPUCCINO** button (fig. 8) until "Install filter" is displayed;
10. Press the **☺/OK** button;
11. The message "Enable?" is displayed.
12. Press the **☺/OK** button to confirm the selection. "Hot water Confirm?" is displayed;
13. Position a container under the hot water spout (min. capacity: 500 ml);
14. Press the **☺/OK** button to confirm the selection. The appliance begins hot water delivery and the message "Please wait" is displayed;
15. After delivery, the appliance returns automatically to the "Ready for coffee" position.

The new filter is active. You can now use the coffee maker.

Replacing the filter



When “REPLACE FILTER” is displayed, after two months (see date indicator) or when the appliance has not been used for 3 weeks, you should replace the filter:

1. Extract the tank and exhausted filter;
2. Take the new filter out of its packet and proceed as illustrated in points 2, 3, 4, 5 and 6 in the previous section.
3. Position a container with a minimum capacity of 17 fl oz / 500 ml under the hot water spout.
4. Press the **MENU/ESC** button to enter the menu;
5. Press the **MILK** or **CAPPUCCINO** button until “Replace filter” is displayed.
6. Press the /OK button;
7. The message “Confirm?” is displayed.
8. Press the /OK button to confirm the selection;
9. “Hot water... Confirm?” is displayed.
10. Press the /OK button to confirm the selection. the appliance begins delivering hot water and the message “Please wait” is displayed.
11. After delivery, the appliance returns automatically to the “ready for coffee” position.

The new filter is now active and you can use the coffee maker.

Removing the filter


If you want to continue using the appliance without a filter, you must remove it and notify the appliance of its removal as follows:


1. Extract the tank and exhausted filter;
2. Press the **MENU/ESC** button to enter the menu;
3. Press the **MILK** or **CAPPUCCINO** button (fig. 8) until “Install filter Enabled” is displayed;
4. Press the /OK button
5. “Disable?” is displayed;
6. Press the /OK button to confirm and the **MENU/ESC** button to exit the menu.

TECHNICAL SPECIFICATION

Voltage:	120 V~ 60 Hz max. 10A
Absorbed power:	1250W
Pressure:	15 bar
Water tank capacity:	67.628 fl oz / 2.0 litres max.
Size LxHxD:	238x350x445 mm
Cable length:	1.80 m
Weight:	11.8 kg
Beans container capacity:	250 g max.

DISPLAYED MESSAGES

DISPLAYED MESSAGE	POSSIBLE CAUSE	SOLUTION
FILL TANK	Insufficient water in the tank.	Fill the tank with water and/or insert it correctly, pushing it as far as it will go until it clicks into place.
EMPTY GROUNDS CONTAINER	The grounds container (A22) is full.	Empty the grounds container and drip tray, clean and replace. Important: when removing the drip tray, the grounds container must be emptied, even if it is not completely full. If this is not done, when you make the next coffees, the grounds container may fill up more than expected and clog the machine.
GROUND TOO FINE ADJUST MILL	The grinding is too fine and the coffee is delivered too slowly or not at all.	The grinding is too fine and the coffee is delivered too slowly or not at all. Repeat coffee delivery and turn the grinding adjustment dial (fig. 12) one click clockwise towards “7” while the coffee mill is in operation. If after making at least 2 coffees delivery is still too slow, repeat the correction procedure, turning the grinding adjustment dial another click until delivery is correct (see the section: “Adjusting the coffee mill” on page 13). If the problem persists, make sure the water tank is fully inserted, press the  /OK button and deliver a little water from the spout.


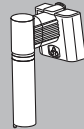

INSERT GROUNDS CONTAINER	After cleaning, the grounds container has not been replaced.	Remove the drip tray and insert the grounds container.
ADD PRE-GROUND COFFEE	With the pre-ground function selected, pre-ground coffee has not been poured into the funnel.	Place pre-ground coffee in the funnel or deselect the “pre-ground” function (fig. 17).
DESCALE	The machine must be descaled.	The descaling procedure described in the section “Descaling” needs to be performed as soon as possible (page 18).
LESS COFFEE	Too much coffee has been used.	Select a milder taste by pressing the dial  (fig. 9) or reduce the quantity of pre-ground coffee.
FILL BEANS CONTAINER	The coffee beans have run out.	Fill the beans container (fig. 13).
	The pre-ground coffee funnel is clogged.	Empty the funnel with the help of a brush as described in the section “Cleaning the pre-ground coffee funnel”.
INSERT INFUSER ASSEMBLY	The infuser has not been replaced after cleaning.	Insert the infuser as described in the paragraph “Cleaning the infuser”.
INSERT TANK	The tank is not correctly in place.	Insert the tank correctly and press as far as it will go.

TROUBLESHOOTING

Below is a list of some of the possible malfunctions.

If the problem cannot be resolved as described, contact Customer Services.

PROBLEM	POSSIBLE CAUSE	SOLUTION
The coffee is not hot	The cups were not preheated.	<ul style="list-style-type: none"> Enable the cup warmer, leave the cups at least 20 minutes to warm up. Warm the cups by rinsing them with hot water (N.B. you can use the hot water function).
	The infuser has cooled down because 2/3 minutes have elapsed since the last coffee was made.	Before making the coffee, warm the infuser by using the Rinsing function to perform a rinse cycle (page 10).
	Low coffee temperature is set.	In the menu, set a higher coffee temperature.
The coffee is thin or not creamy enough.	The coffee is ground too coarsely.	Turn the grinding adjustment dial one click anticlockwise towards “1” while the coffee mill is in operation (fig. 12). Continue one click at a time until coffee delivery is satisfactory. The effect is only visible after delivering 2 coffees (see the section: “adjusting the coffee mill” on page 13).
	The coffee is unsuitable.	Use pre-ground coffee for espresso coffee makers

The coffee is delivered too slowly or a drop at a time.	The coffee is ground too finely.	Turn the grinding adjustment dial one click clockwise towards "7" while the coffee mill is in operation (fig. 12). Continue one click at a time until coffee delivery is satisfactory. The effect is only visible after delivering two coffees. (see the section "adjusting the coffee mill" on page 13).
Coffee does not come out of one of the spouts.	The spouts are blocked.	Clean the spouts with a toothpick (fig. 29B).
	The milk does not come out of the milk spout.	Clean the milk container lid as described in the section "Cleaning the milk container".
	The milk contains large bubbles and squirts out of the milk spout or there is little froth .	Clean the milk container lid as described in the section "cleaning the milk container".
	the milk container lid is dirty.	Clean the milk container lid as described in the section "cleaning the milk container".
	the milk is not cold enough or is not semi-skimmed.	Use skimmed or semi-skimmed milk at refrigerator temperature (about 5° c). If the result is not as you wished, try changing brand of milk.
	The froth adjustment dial is incorrectly adjusted.	Adjust following the instructions in the section "making drinks with milk".
	The milk container lid or froth adjustment dial is dirty	Clean the milk container lid and dial as described in the section "cleaning the milk container".
	The hot water/steam nozzle is dirty	Clean the nozzle as described in the section "cleaning the hot water/steam nozzle".
The appliance does not come on.	The spout is dirty.	Clean as described in the section "Cleaning the spout after use".
	It is not plugged into the mains socket.	Plug into the mains socket.
	The main switch (A7) is not turned on.	Place the main switch in the i position (fig. 2).
The infuser cannot be extracted	The appliance has not been turned off correctly	Turn the appliance off by pressing the  button (pag. 10).

LIMITED WARRANTY

This warranty applies to all products with De'Longhi or Kenwood brand names.

What does the warranty cover?

We warrant each appliance to be free from defects in material and workmanship. Our obligation under this warranty is limited to repair at our factory or authorized service center of any defective parts or part thereof, other than parts damaged in transit. In the event of a products replacement or return, the unit must be returned transportation prepaid. The repaired or replacement model will be returned at the company expense.

This warranty shall apply only if the appliance is used in accordance with the factory directions, which accompany it, and on an Alternating current (AC) circuit.

How long does the coverage last?

This warranty runs for two years (2) from the purchase date found on your receipt and applies only to the original purchaser for use.

What is not covered by the warranty?

The warranty does not cover defects or damage of the appliance, which result from repairs or alterations to the appliance outside our factory or authorized service centers, nor shall it apply to any appliance, which has been subject to abuse, misuse, negligence or accidents. Also, consequential and incidental damage resulting from the use of this product or arising out of any breach of contract or breach of this warranty are not recoverable under this warranty. Some states do not allow the exclusion or limitation of incidental or consequential damage, so the above limitation may not apply to you.

How do you get service?

If repairs become necessary, see contact information below:

U.S. Residents: Please contact our toll free hotline at 1-866-528-8323 (1-866-Latte-Best) or log onto our website at www.delonghi.com

Residents of Canada: Please contact our toll free hotline at 1-888-335-6644 or log onto our website at www.delonghi.com

Residents of Mexico: Please contact our toll free number 01-800-711-8805 for assistance or log onto our website at www.delonghi.com

The above warranty is in lieu of all other express warranties and representations. All implied warranties are limited to the applicable warranty period set forth above. This limitation does not apply if you enter into an extended warranty with De'Longhi. Some states/countries do not allow limitations on how long an implied warranty lasts, so the above exclusions may not apply to you. De'Longhi does not authorize any other person or company to assume for it any liability in connection with the sale or use of its appliance.

How does country law apply?

This warranty gives you specific legal rights, and you may also have other rights, which vary from state to state/country to country.